



# What's New in the IBM Notes and Domino Social Edition



November 14, 2012

#XPages

@GBSKnows

@TLCCLtd

# Your Hosts Today:



**Howard Greenberg**  
TLCC  
@TLCCLtd



**Paul Della-Nebbia**  
TLCC  
@paulDN

## Upcoming Webinars

X Series	Date
<b>Q and A with the XPages Experts</b> <ul style="list-style-type: none"> <li>➤ Paul Calhoun - Using Apache FOP for creating PDF's</li> <li>➤ Gary Forbis - Integrating existing LotusScript script libraries with XPages</li> <li>➤ Chris Toohey - Responsive Layout Frameworks for XPages Application UI</li> <li>➤ Keith Strickland</li> </ul>	Dec. 12, 2012

For more information and to register go to:

<http://www.tlcc.com/xpages-webinar>

- Six XPages Courses!

- Introduction to XPages Development ... **FREE !!**
- JavaScript for XPages Development
- Developing XPages Using Domino Designer 8.5
- XPages Development 2 for Notes and Domino 8.5
- Mobile XPages for Domino 8.5
- Java 1 for XPages Developers

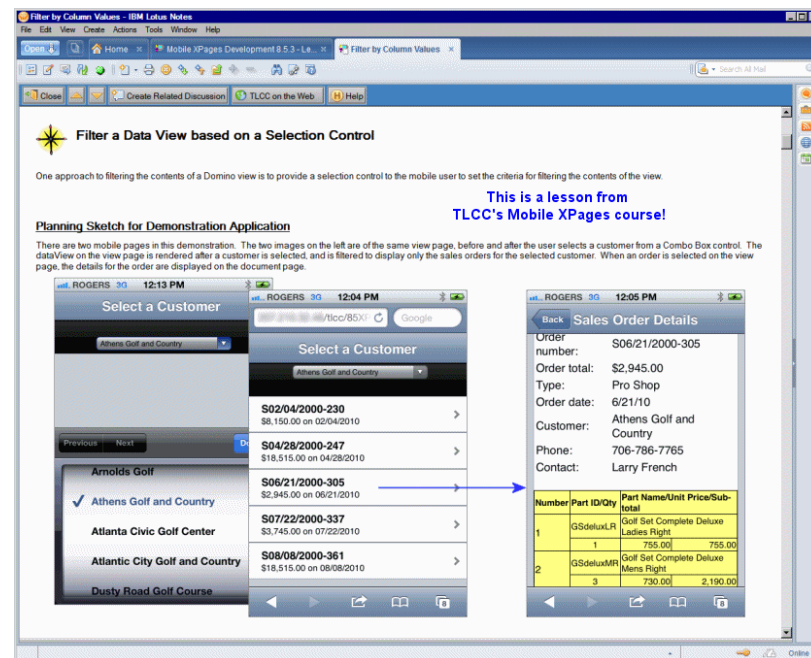
- Self Paced Training

- Learn anywhere!
- An Instructor is a click away
- Instructor Office Hours

- Instructor Led (Private)

- Online or at your site

- TLCC Mentoring Services



## Webinar Agenda

### Overview of IBM Notes and Domino Social Edition



**Ed Brill**  
Director  
@edbrill  
[www.edbrill.com](http://www.edbrill.com)

### What's New in Domino Designer in Social Edition



**Dan O'Connor**  
Team Lead  
Domino Designer  
@doconnor78

### What's New in XPages for Social Edition



**Martin Donnelly**  
Team Lead  
XPages Runtime  
@TweeterDonnelly

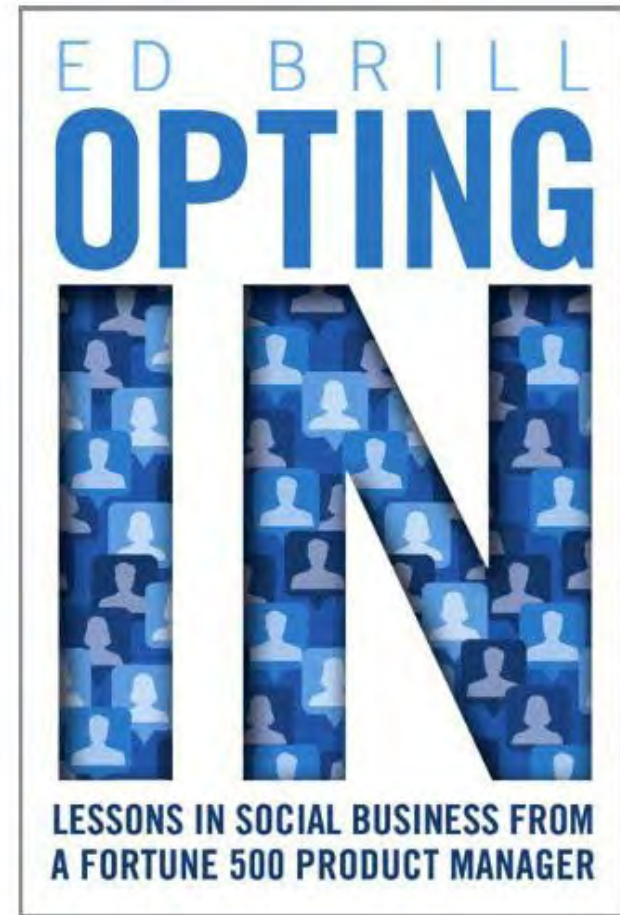


## Ed Brill

Director for Social Business  
and Collaboration Solutions

[www.edbrill.com](http://www.edbrill.com)

@edbrill



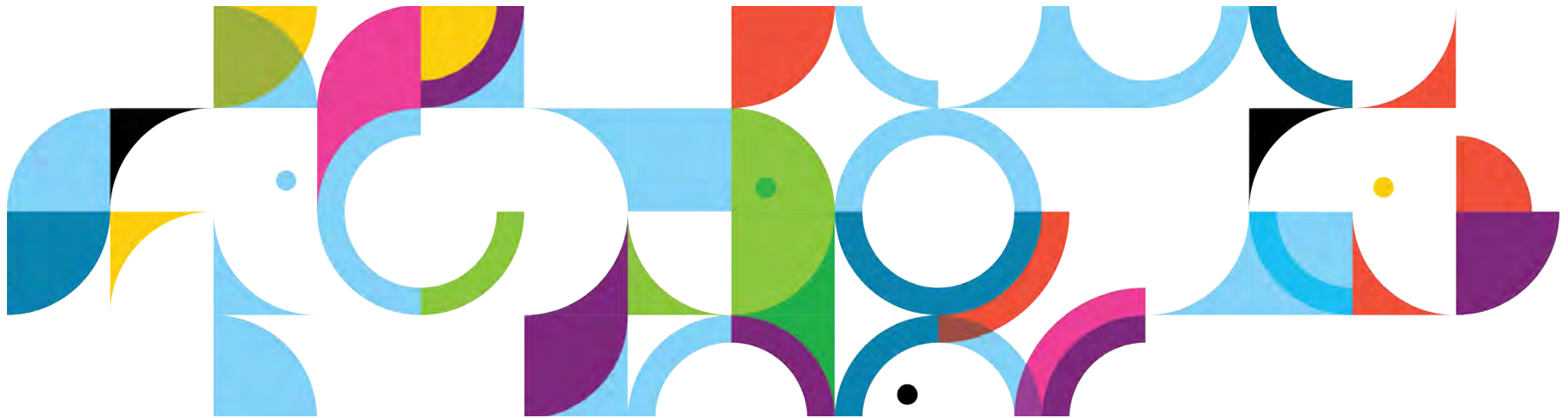


# Domino Application Development Social Edition Update

Ed Brill – Director Social Business & Collaboration – IBM

Dan O'Connor – Domino Designer Team Lead – IBM

Martin Donnelly – XPages Architect/Team Lead - IBM



## Introductions

- **Ed Brill – Director for Social Business and Collaboration Solutions – IBM**

- Blog: <http://edbrill.com>



- **Dan O'Connor – Domino Designer Team Lead - IBM**

- Author of XPages Portable Command Guide
  - OpenNTF Contributor



- **Martin Donnelly - Software Architect - IBM**

- IBM Lotus® Domino® Designer 8.5.x / IBM Lotus® Domino® XPages
  - Author of Mastering XPages & XPages Portable Command Guide
  - OpenNTF Contributor





## Disclaimer

The information contained in this publication is provided for informational purposes only. While efforts were made to verify the completeness and accuracy of the information contained in this publication, it is provided AS IS without warranty of any kind, express or implied. In addition, this information is based on IBM's current product plans and strategy, which are subject to change by IBM without notice. IBM shall not be responsible for any damages arising out of the use of, or otherwise related to, this publication or any other materials. Nothing contained in this publication is intended to, nor shall have the effect of, creating any warranties or representations from IBM or its suppliers or licensors, or altering the terms and conditions of the applicable license agreement governing the use of IBM software.

References in this publication to IBM products, programs, or services do not imply that they will be available in all countries in which IBM operates. Product release dates and/or capabilities referenced in this presentation may change at any time at IBM's sole discretion based on market opportunities or other factors, and are not intended to be a commitment to future product or feature availability in any way. Nothing contained in these materials is intended to, nor shall have the effect of, stating or implying that any activities undertaken by you will result in any specific sales, revenue growth or other results.

All customer examples described are presented as illustrations of how those customers have used IBM products and the results they may have achieved. Actual environmental costs and performance characteristics may vary by customer.

IBM, the IBM logo, Lotus, Lotus Notes, Notes, Domino, DeveloperWorks and Workplace are trademarks of International Business Machines Corporation in the United States, other countries, or both.

Java and all Java-based trademarks are trademarks of Sun Microsystems, Inc. in the United States, other countries, or both

All references to Renovations refer to a fictitious company and are used for illustration purposes only.

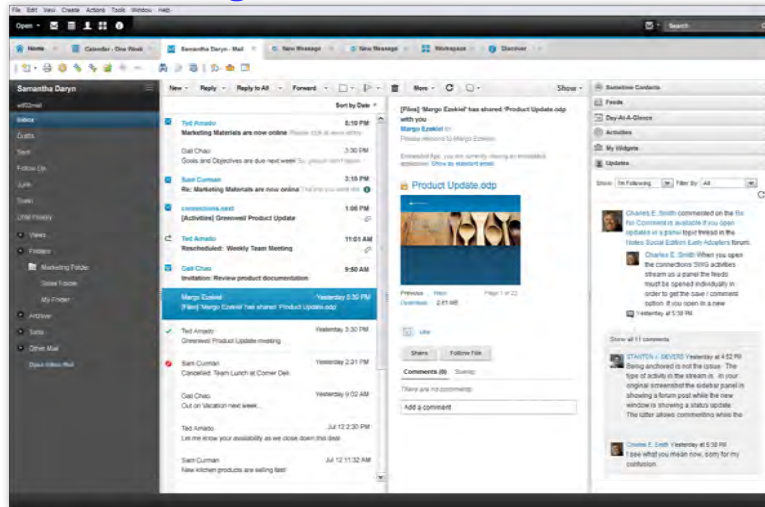
Other company, product, or service names may be trademarks or service marks of others.

# Agenda

- **Social Edition Update**
- **Domino Designer Updates**
  - Integration of 8.5.3 Upgrade Pack 1
  - Usability improvements
  - New debugger
- **XPages Updates**
  - Dojo & CKEditor updates
  - Performance improvements
  - XPiNC performance improvements
  - Social features updates
  - Client side JS enhancements
- **Q&A – Your turn!!**

# IBM Notes and Domino Social Edition – planned for Q1 2013

*Build a smarter workforce by more deeply integrating social and business information to engage expertise, share and gather information, and make better decisions*



- ✓ Provides modern, in-context social collaboration capabilities, based on OpenSocial standard:
  - Activity stream → View and take action quickly on content and events in context, without switching among applications
  - Embedded Experiences → Access business critical actions from a wide variety of applications, including 3rd party applications
- ✓ Upgraded, no cost entitlements for IBM Connections 4.0 Files & Profiles applications and Mobile access
- ✓ Application Development → Easier and faster than ever
- ✓ IBM Notes Browser plugin → Easy access to IBM Notes Social Edition applications from a browser
- ✓ Traveler → Support for To Do function on iOS & Android, Windows Phone 7.5/8, and IBM i server
- <sup>5</sup> ✓ Public beta coming in Q4 2012, managed beta available today!

## Domino 9 Social Edition beta – objectives

### Reduce TCO

- Database Management Tool
- NSD monitor for Unix
- Quality of Service probe
- Simplified Notes ID management via SAML support

### Enhance Security

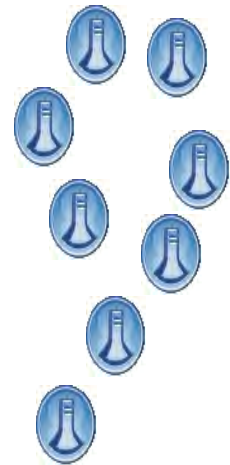
- SHA-2 support for encryption
- Transport Layer Security(TLS) delivered via IBM his
- OAUTH credential store to support Embedded Experiences

### Platform expansion

- Continued focus on virtualization and 64bit platform support

### Infrastructure for Social Business

- SSO via SAML support for both web and Notes access



## Notes Traveler upcoming key features

### Notes Traveler 9.0 beta

- Support for Traveler running in IBM I
- Support for Windows Phone 7.5, Windows Phone 8 and Windows Surface Tablets
- Support for BlackBerry 10 Devices connecting to Traveler through BlackBerry Enterprise Service 10 (BES 10)

### Future Traveler upgrade pack considerations

- Mobile device management API's for on Premise deployments
- Enhanced attachment security policies
- Sametime online meetings integration
- Sending and receiving encrypted mail with Internet users
- Enable Synching of Trash folder
- Smart Forward/Reply
- Certificate based authentication
- Integration with IBM Connections Mobile and Sametime Mobile



## Notes 9 Social Edition beta: consumability enhancements

**Click on URLs in edit mode**

**Categorize inbox by date (“Today,” “Yesterday,” “Last Week”)**

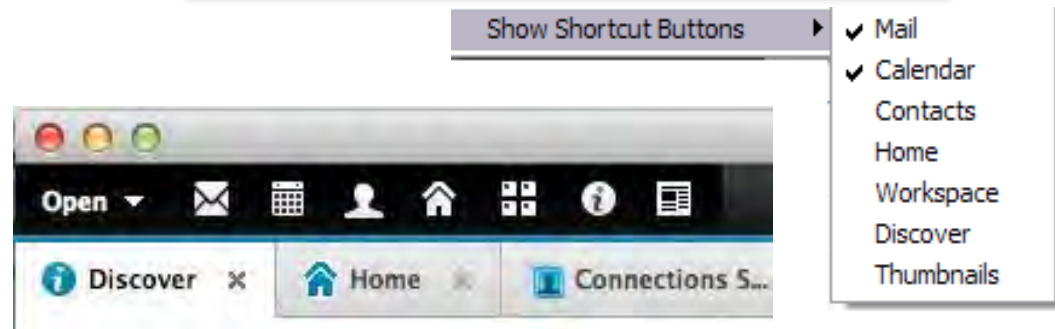
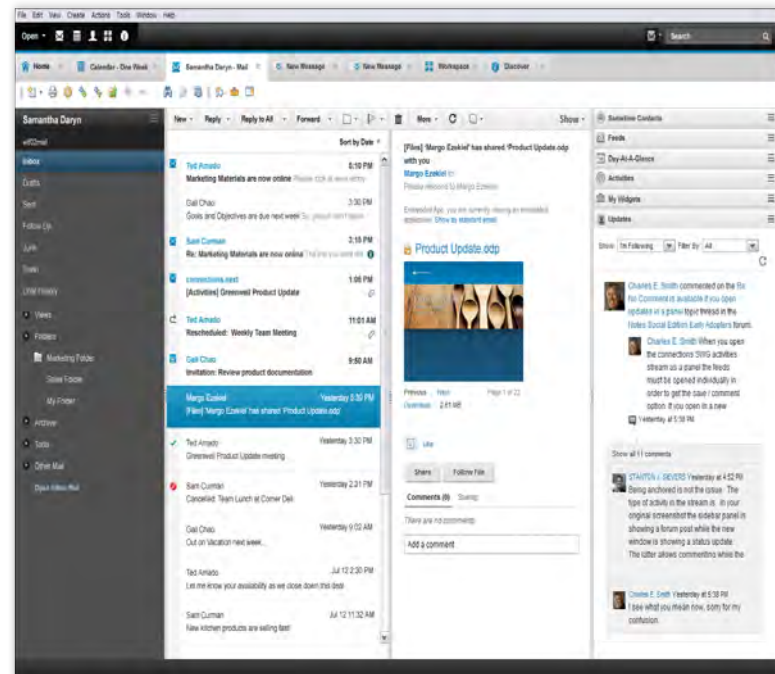
**Single-click access to Mail, Calendar, Contacts and more**

**“Rolling Calendar” view (additive weeks)**

**“Weekly Planner” view**

**Mac Cocoa support**

**IBM Connections support with IBM Connections 4**





# iNotes 9 Social Edition beta enhancements

**Tighter portfolio integration**

**Simplified calendar entry**

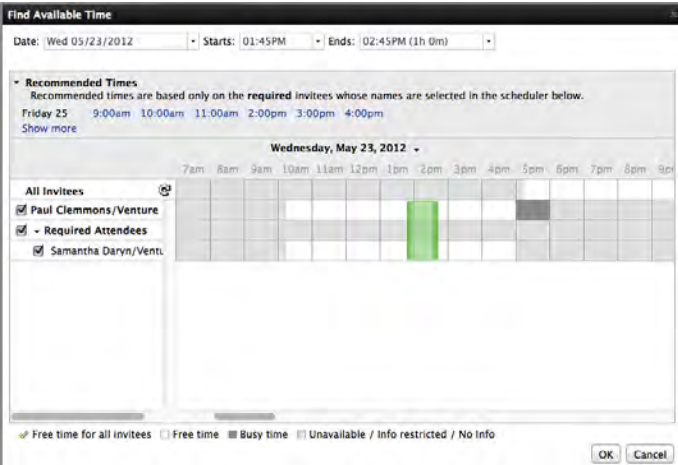
**Improved scheduler**

**OpenSocial gadgets integration**

**Sidebar extensibility**

**Live Text**

**Relocate folders**



**Find Available Time**

Date: Wed 05/23/2012 Starts: 01:45PM Ends: 02:45PM (1h 0m)

**Recommended Times**  
Recommended times are based only on the **required** invitees whose names are selected in the scheduler below.  
Friday 25 9:00am 10:00am 11:00am 2:00pm 3:00pm 4:00pm  
[Show more](#)

Wednesday, May 23, 2012

**All Invitees**

- ☒ Paul Clemmons/Venture
- ☒ - Required Attendees
- ☒ Samantha Daryn/Venture

Free time for all invitees ☒ Free time ☐ Busy time ☐ Unavailable / Info restricted / No Info

[OK](#) [Cancel](#) [Show Details](#)

**You are not available at this time.** | [Propose New Time](#) | [Check Calendar](#)

Time: Thu 05/24/2012 12:00PM - 01:00PM  
Location: No Location Information

**Invitees** (1 Required, 0 Optional)

Required:  
Paul Clemmons

**Description**

Loading documents...

## IBM Lotus Notes Browser Plug-in Part of Notes 9 Social Edition beta

**Designed to extend reach of applications previously available only to Notes users**

**Provides a powerful compliment to existing XPages capabilities**

**Allows applications to run in a browser with no modification!**

**Lightweight install, similar to other plug-ins in size, deployment, configuration**

**Minimal limitations:**

- Windows only (for now, at least!)
- Not designed to support mail template, rather, to work in conjunction with iNotes
- Firefox and Internet Explorer along with Citrix, in first release

## Application Development Themes for Social Edition

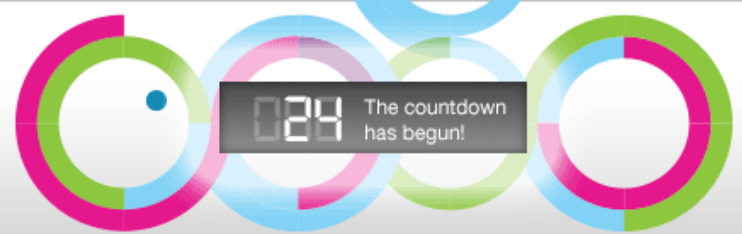
**Developer productivity:** Improve developer productivity by making common tasks easier for new and experienced developers

**Web development:** Deliver new and update existing capabilities for building web applications

**Programmability:** Deliver new APIs for working with Domino data and common services

**Mobile:** Enhance ability to build new and mobilize existing applications

**Social:** Integrate social services into your collaborative applications and extend the reach of those applications into social containers



## 1 Social Business Means Business

- Social Businesses can see up to 25% increase in productivity.\*
- People-focused businesses generate 26% more revenue per employee.\*\*

## 2 Take advantage of the discounts!

- Oct 27 to Dec 10 – \$2,095 USD
- Dec 11 to Jan 25 – \$2,295 USD

## 3 Lotusphere Technical Program.

Celebrate our 20th year!  
Hundreds of technical sessions with deep-dive content attendees have come to expect.

## 4 Smarter Workforce Track

- Engage the right people **new** right time
- Foster better collaboration
- Motivate and empower employees to improve productivity
- Unleash innovation to transform your workforce.

## 5 Exceptional Customer Experience Tra **new**

Increase customer loyalty, advocacy and revenue by delighting customers, listening, analyzing and acting upon new insights

## 6 Get social!

- Follow @IBMConnect and @IBMSocialBiz on Twitter
- Like IBMSocialBiz on Facebook
- Tweet using #IBMConnect

\*McKinsey Global Institute Report, July 2012

\*\*Bersin & Associates Research Report, June 2011

Register now for IBM Connect 2013  
[ibm.com/Connect](http://ibm.com/Connect) **January 27-31**

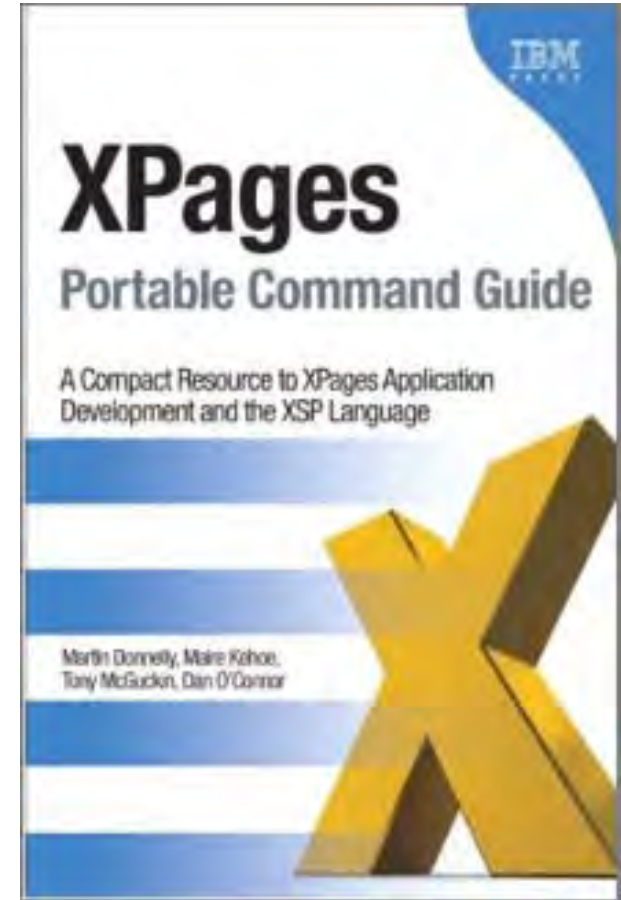
SocialBusiness





**Dan O'Connor**  
Team Lead Domino Designer  
IBM

@doconnor78

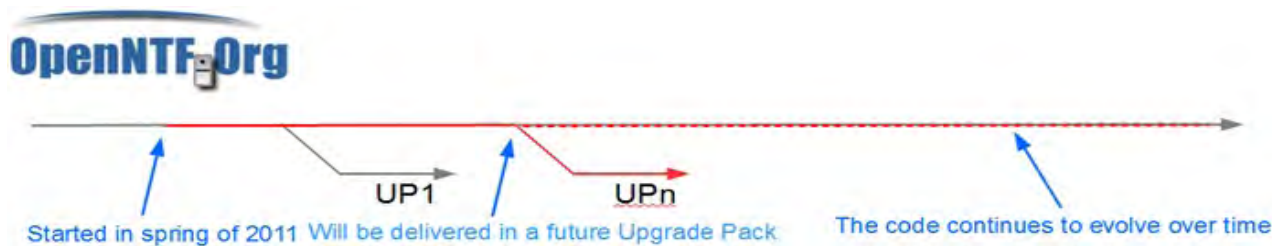


## Domino Designer Social Edition Design Goals

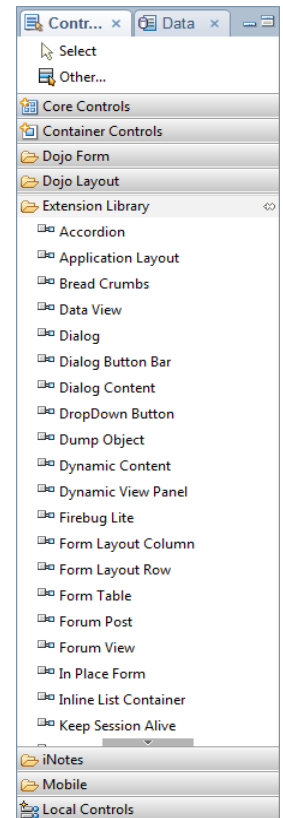
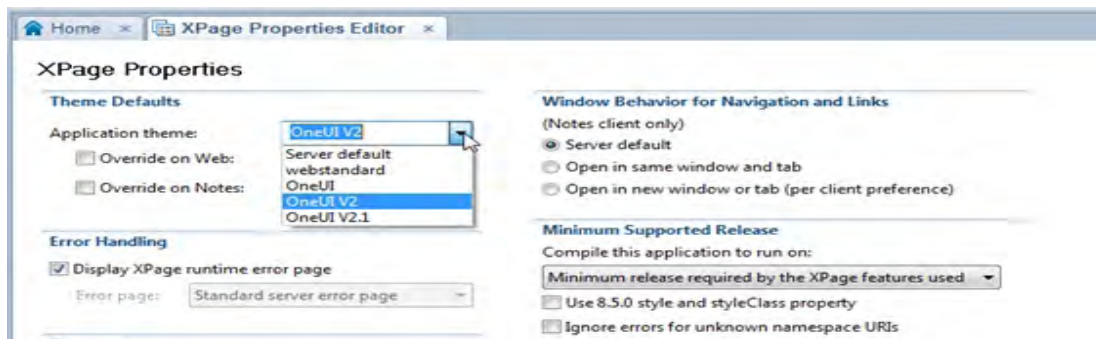
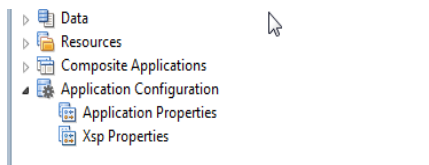
- **Integrate Domino Designer Extension Library tooling into Designer “core”**
- **Improve Server Side JavaScript debugging experience!!**
- **Improve Domino Designer “Welcome” and “Home Page” experiences**
- **Improve XPages developer productivity**
- **New Jar design element**
- **Integrate and improve XSP Properties editor**
- **Bug fixes and quality improvements in key 'high traffic' areas (such as LS editor)**



## Integration of Upgrade Pack One Controls into “Core”

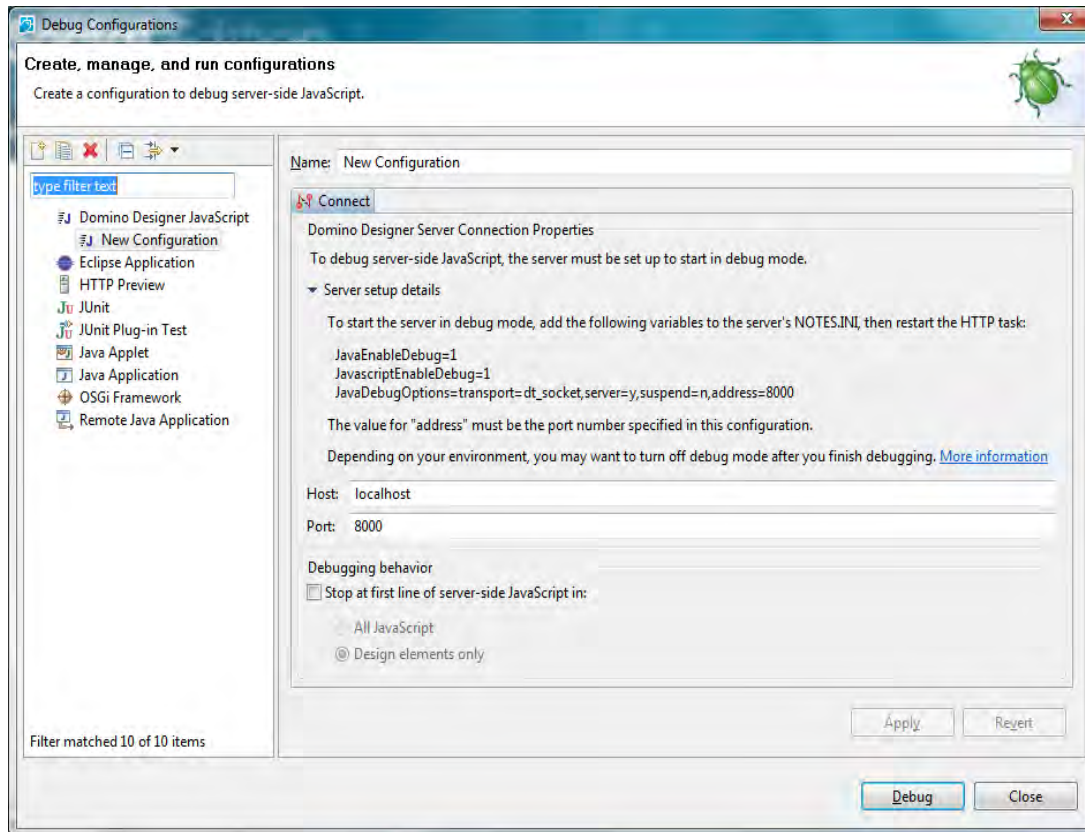


- Integration of 100+ extension library controls from 'UP1' into core
- Integration of XSP Properties editor from UP1 into Domino Designer



# Domino Designer Server Side JavaScript Debugger

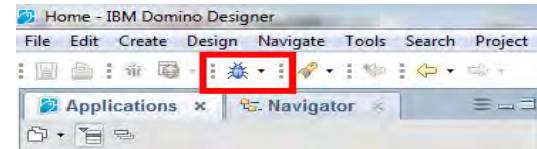
- **We heard you!!!!**
- **New “Domino Designer Server Side JavaScript” Debug Configuration**



- Debugging is only supported on Domino Social Edition servers and later
- Debugger is based on Eclipse “Remote Java Connection” protocol and uses JPDA/JDI

## Domino Designer Server Side JavaScript Debugger

- Debugger can be invoked from a new toolbar item
- Breakpoints can be set directly within XPages' SSJS or within SSJS Script Library
- New '*breakpoint*' keyword has been added to the SSJS syntax to allow for permanent breakpoints
  - Breakpoints are only enabled when the server is running in debug mode
- **Sever must be configured to run in 'debug mode' in order for debugger to work**
  - Note this implies that a port must be opened on the server, so it is not recommended to debug servers that have unprotected access to the internet!
    - ✓ *JavaEnableDebug=1*
    - ✓ *JavascriptEnableDebug=1*
    - ✓ *JavaDebugOptions=transport=dt\_socket,server=y,suspend=n,address=8000*



# Debugging Server Side JavaScript!

The screenshot displays the IBM Domino Designer interface with three main components highlighted for debugging:

- Server Call Stack:** Located at the top, it shows the execution path of the JavaScript thread. A red arrow points to the entry for `/xpview(1)/xp:this.data(1)/xe:objectData(1)/xe Line: 7`.
- Breakpoints in Server Side JS code with the XPages editor:** The central editor shows the XPage source code. A red arrow points to a breakpoint set on the line `return parseLotusLiveProfile(result);`.
- Server side JS variables:** The right-hand pane shows the **Variables** window. A red arrow points to the `result` variable, which is an `Object` (id=420223244). Below it, the `entry` variable is also an `Object` (id=425990500).

The Variables window lists the following variables and their values:

Name	Value
<b>result</b>	[Object] (id=420223244)
entry	[Object] (id=425990500)
params	[Object] (id=727133015)
svc	(id=1332)
ep	(id=1062)
authenticationService	null
forceTrustSSLCertificate	false
label	null
oaProvider	OAProvider (id=1071)
proxyEnabled	false
requiresAuthentication	false
url	"https://apps.lotuslive.com" (id=1812)
lbl	undefined
s	XPages Social Enabler - LotusLive Profiles

## Client-Side JavaScript/Dojo Debug Option

- **New debug options**

- Use case:

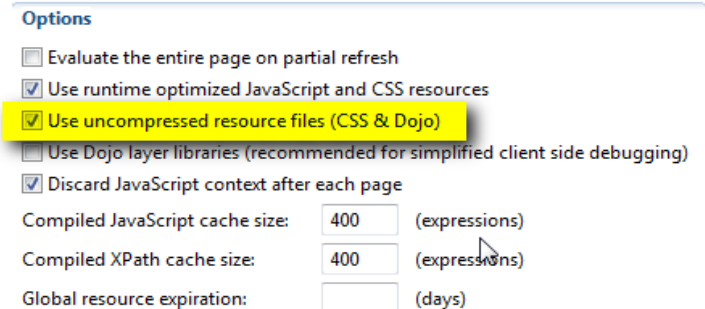
- Dojo Library deployed in an OSGi bundle on the server
    - Developer needs to debug uncompressed version of the source files
      - ✓ e.g. xspClientDojo.js vs xspClientDojo.js.uncompressed.js

- How:

- Set the “Use uncompressed resources” option in XSP Properties editor

- Result:

- The XPages runtime will server \*.uncompressed.js & \*.uncompressed.css if available (from within the OSGi bundle)



Options

- ☐ Evaluate the entire page on partial refresh
- ☒ Use runtime optimized JavaScript and CSS resources
- ☒ Use uncompressed resource files (CSS & Dojo)
- ☐ Use Dojo layer libraries (recommended for simplified client side debugging)
- ☒ Discard JavaScript context after each page

Compiled JavaScript cache size:  (expressions)

Compiled XPath cache size:  (expressions)

Global resource expiration:  (days)

## Server-Side Debug Options

- **Java Source code is included for all plug-ins in Social edition that originate in 8.5.3 UP1**
- **Development Environment setup:**
  - VERY SIMILAR TO SSJS DEBUG SETUP!! :-)
  - Server must be started in debug mode (again be aware of open server port!)
    - ✓ JavaEnableDebug=1
    - ✓ JavaDebugOptions=transport=dt\_socket,server=y,suspend=n,address=8000
  - Install Domino Debug Plugin into Domino Designer
    - <http://tinyurl.com/XPagesDominoDebugPlugin>
  - Import Java source plug-ins into Domino Designer
    - <http://tinyurl.com/XPagesDesignerInstallSource> (refer to step #11)
  - Set up Domino server and OSGI debug configurations

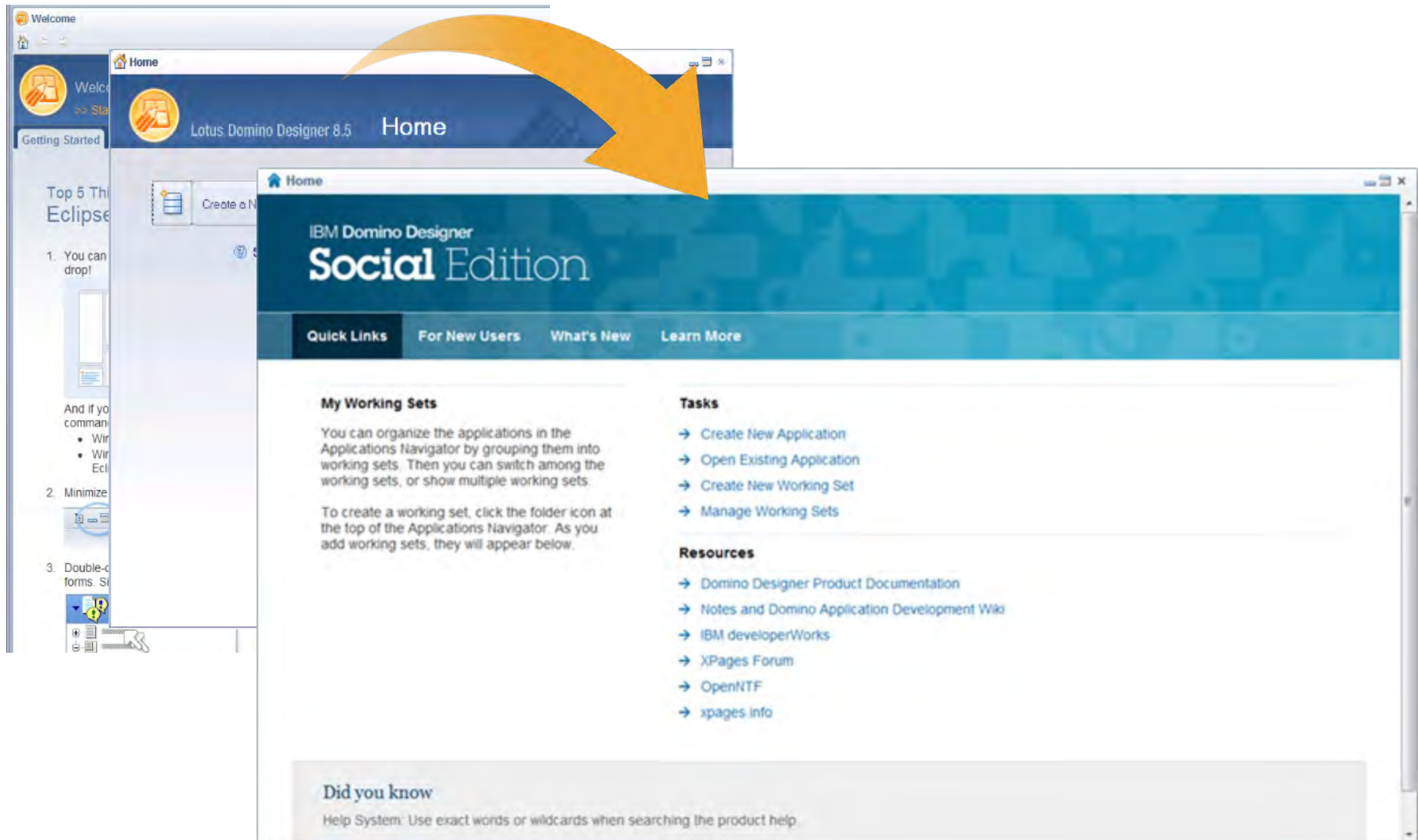


The screenshot shows the OpenNTF.Org website. The header includes the site logo, a navigation menu (Home, Projects, XSnippets, Blog, Follow, Get Involved, People, About), and a banner for 'Turbo charge your email signature' compatible with Lotus Traveler. The main content area displays the 'Tool Project (No Sources): IBM Lotus Domino Debug Plugin' page. On the left, there is a sidebar with links: Overview, Downloads / Releases, News, Screenshots, and Documentation. The main content area shows the following details:

Tool Project (No Sources): IBM Lotus Domino Debug Plugin	
Owners	David Taieb, Niklas Heidloff
Contributors	-
Downloads	477
Platform	R 8.5.2
Last Release	Nov 3, 2010



# Improve Domino Designer “Welcome” and “Home Page” experience

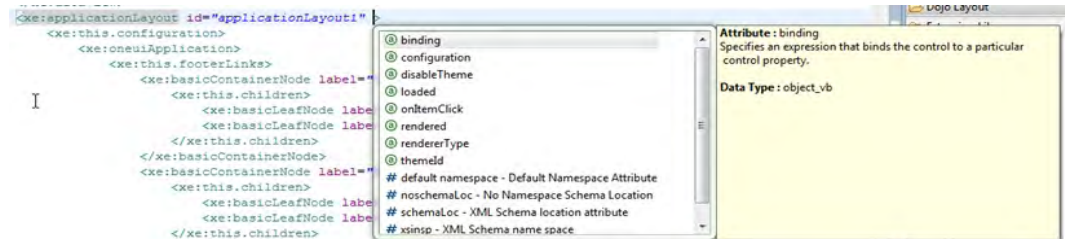


## Home Page and Welcome Experience

- Updated look and feel to align with the new “Discover” page
- Simplified by removing the Welcome page altogether and consolidating content onto Home page
- Updated content with intros and help links to help topics for major functional areas
- *Quick Links* tab provides a list of working sets (shows more than 5 working sets at a time!), task links, links to resources, and tips
- Home remains closed on restart if manually closed before shutdown

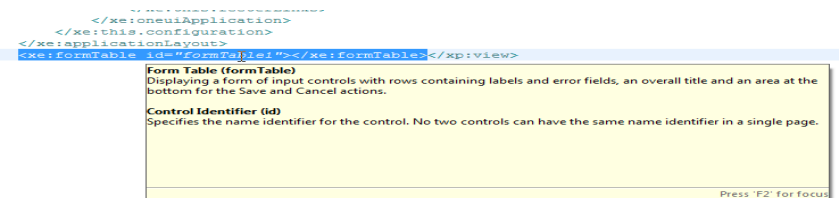
# Improve XPages Developer Productivity

- Content assist in xsp source editor editor!!  
(also works with SSJS in xsp source editor)

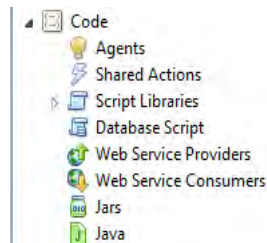


- Hyperlink navigation within the xsp source editor

- Hover help within the xsp source editor

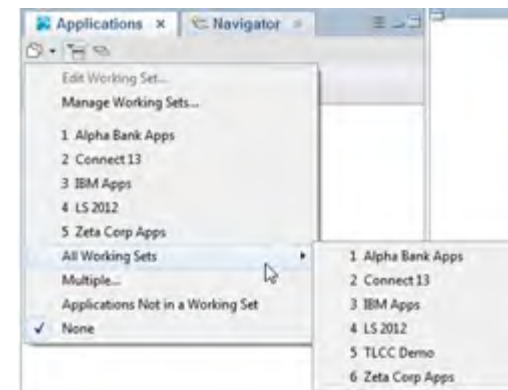


- Palette State Saving



- Jar design element

- Navigator now shows all working sets!! :-)



## Bug Fixes to Critical Issues

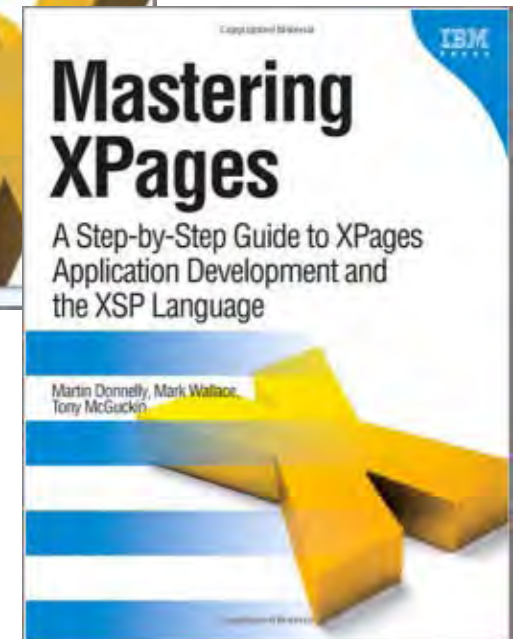
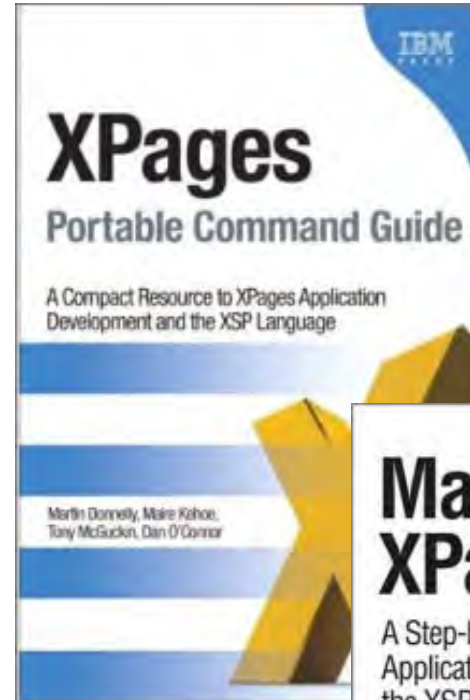
- **Bug fixes for:**
  - Error 500 when using Java Design Element (also fixed in 853 FP1)
  - Source control issues encountered when importing databases with many script libraries (also fixed in 853 FP2)
  - Fixes to tooling issues reported against Upgrade Pack 1
- **Performance/memory improvements in the XPages editor**
- **Fixes to the LotusScript Editor and builder**
  - Problems view reports correct line numbers for LotusScript errors!



## Martin Donnelly

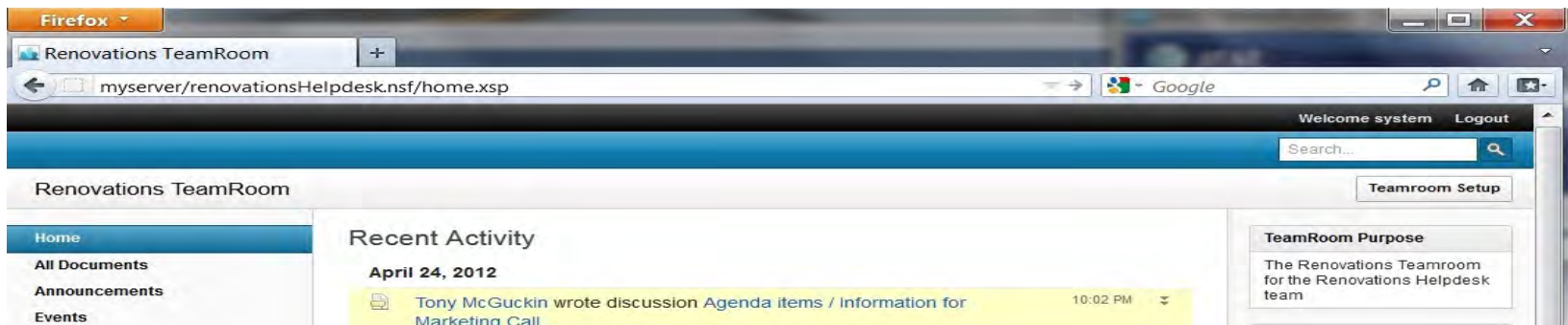
XPages Architect  
Team Lead XPages Runtime  
IBM Ireland

@TweeterDonnelly



## Upgrade of XPages Upgrade Pack 1

- **All *UP1* Features/Plugins installed with Domino server, Designer, Notes client**
  - Actually UP1+ as fixes and enhancements are included
- **Available on all platforms**
  - Windows | Linux | Mac
- **TeamroomXL and DiscussionXL will be included in Social Edition GA**
  - Old XPages Discussion template will be replaced






# Integration of Key XPages Components

- **Dojo 1.8**

- Offers enhanced mobile support and bug fixes
- Xpages runtime does not leverage async mode
  - Reworked Date Time Picker
  - Reworking TypeAhead control
- Issues Fixed in 1.8

<http://bugs.dojotoolkit.org/query?group=status&milestone=1.8>

- **CKEditor 3.6.3**

- Upgraded to 3.6.3 in CD5
  - Possible further upgrade to 3.6.5
- Many issues fixed regarding
  - Multiple instances per XPage
  - Text and other HTML artifacts surrounding inline images
  - Attachment handling
  - Image resizing
- Added support for Spell Checker 
- Better iOS behavior

- **Active Content Filter**

- Upgraded to 2.5.0.11

## Redirect Control

- **Use cases:**

- Traveller or iNotes rewrites the Notes doclink to a web link
- Custom redirect handling required within an application

- **How:**

- Set form display property to a target XPage that includes a Redirect control instance

- **Result:**

- The Redirect control instance will transform the request URL accordingly based on the set of redirect rules

- **Example:**

For a mobile redirect rule:

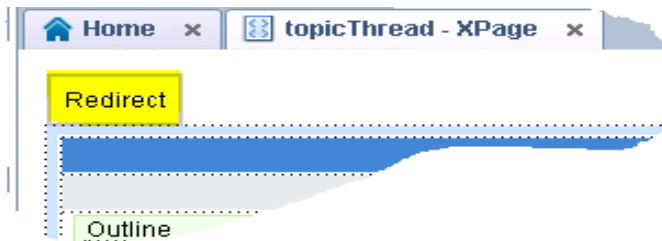
<http://foo/bar.nsf/0e5e7/04aae/?OpenDocument>

becomes...

<http://foo/bar.nsf/mobile.xsp?documentId=04AAE&action=openDocument#document>



Demo



```
<xe:redirect>
  <xe:this.rules>
    <xe:redirectPhoneRule url="mobile.xsp"
      disableRequestParams="false" urlHash="document">
    </xe:redirectPhoneRule>
    <xe:redirectTabletRule url="mobile.xsp"
      disableRequestParams="false" urlHash="document">
    </xe:redirectTabletRule>
  </xe:this.rules>
</xe:redirect>
```

# XPages Social Edition Integration Points

## • New XPages SendMail Action:

- Drag & Drop action to facilitate sending simple e-mail
- Advanced features support Embedded Experience
  - Encapsulates required JSON or XML payload




Demo

Getting started with IBM Connections

☐ Do not show this screen at start

Reply Forward Mark as Unread Move to... Delete

☆ Teamroom was shared with you!

 Amy Jones102  
To: Amy Jones102  
Oct 18 2:19 PM

Format: This message is displaying an embedded experience. [Show Original Message](#)

Home  
All Documents  
Announcements  
Events  
Status Reports  
Calendar  
Members and Subteams  
Creative Documents


All Documents

Show: All All by date All by author All by team Filter by:

New Document

Collapse All Expand All

Title

 from connections mail ee

Enter values for simple action arguments

Category: Basic

Action: Send Mail

Arguments for this Action

Basics Deliver Options Embedded Experience

Format: JSON

HTML URL:

Gadget URL:

Gadget context properties:

Name	Value
------	-------

Add Remove

OK Cancel

## A Fresh Look at XPiNC in Social Edition beta

### **XPiNC Challenges ...**

- Programmatic access to the client desktop
- Initial application load time
- Performance issues with remote applications

### **... XPiNC Remedies**

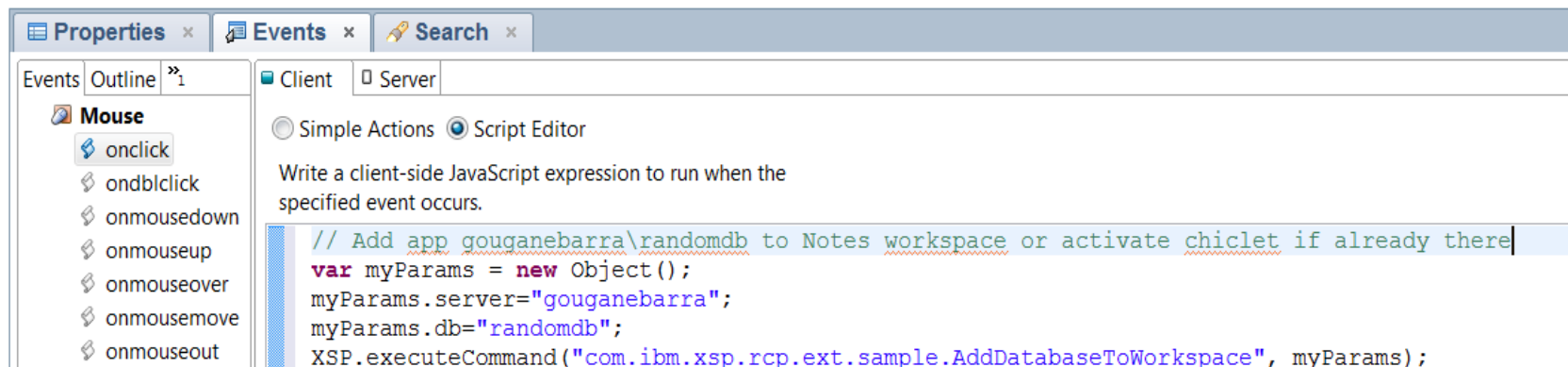
- New XPiNC Extensible JavaScript/Java Bridge
- Application Preloading
  - XPagesPreload=1
    - Bootstraps just the core XPages runtime
  - XPagesPreloadDB=db.nsf/myPage.xsp, other.nsf/myPage.xsp
    - Loads specific application(s)
- The Single-Copy-XPages-Design + Preload Pattern
- New XPiNC RunOnServer facility
- XULRunner Upgrade – work ongoing but not guaranteed for Social Edition

## XPiNC Client Side JavaScript Enhancements



- **XSP.executeCommand() - How it works:**

- XSP.executeCommand() uses same runtime path as other XPiNC XSP JS commands
  - e.g. XSP.alert(), XSP.confirm(), XSP.publishEvent(), etc.
- When an XSP.executeCommand() is called XPages looks through the list of registered command providers
  - If a contributor is found who handles the command it is called
    - commandIds are name-spaced
  - Command is executed and result, if required, returned
- Sample JS code might look this in Designer





## XPiNC Client Side JavaScript Enhancements

- **XPiNC now has an extensible client side JavaScript model**
  - Since 8.5.1 XPiNC client side XSP programming model has been limited
    - Developers were limited to a small number of predefined commands  
e.g. XSP.alert(.) XSP.confirm(..) ec
  - New XSP command in Social Edition
    - XSP.executeCommand(commandId, commandParams)
      - commandId identifies the requested function
      - commandParams is an object containing arbitrary arg values
      - ... or can simply be null, not present or an arbitrary list etc
  - The referenced commands can be implemented via a Java plug-in
    - Ext point name = “**com.ibm.xsp.rcp.ExtendedCommands**”
    - Uses simple **IExtendedCommands** Java interface
  - Provides secure access to:
    - Notes front-end functionality via
      - NotesUIWorkspace classes
      - Eclipse framework
      - Custom Java code

# XPiNC Preloading

## Application Initial Load Times

- What happens when you load your 1<sup>st</sup> XPages application in a Notes session ?
  - XPages runtime must bootstrap
    - A lot of Java class loading... 
  - The application launch page plus any other dependent custom controls, libraries must run
    - Potentially a lot of Java class loading... 
- 1<sup>st</sup> application can be slow to open (cold start)
- 2<sup>nd</sup> and subsequent applications are considerably faster (warm start) - why?
  - XPages has been bootstrapped
  - Web container has been started
  - XULRunner has been loaded



## Application Preloading

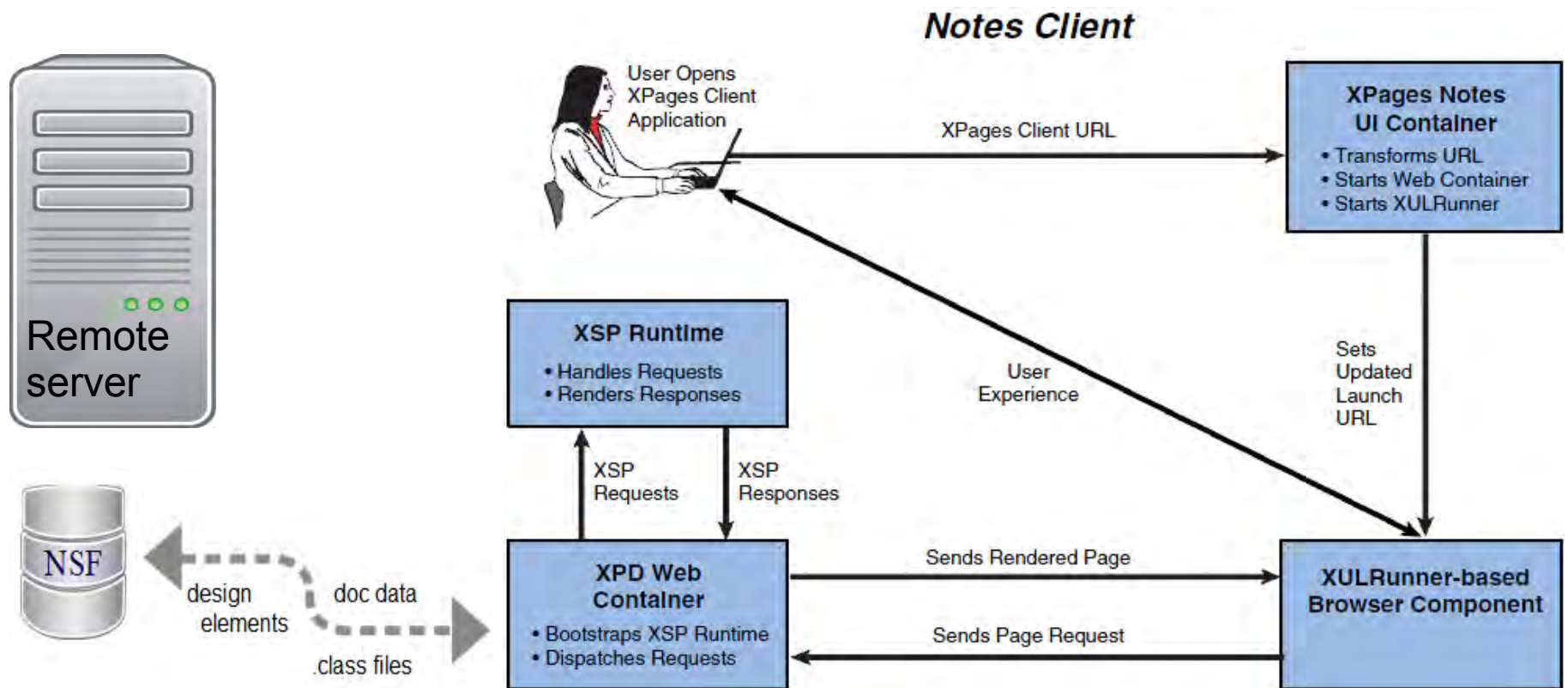
- Simulate warm start performance through early application loading
  - Preload required app(s) as soon as Notes has starts up
- Bootstrapping is complete by the time user launches app for 1<sup>st</sup> time



## XPiNC in Remote Execution Mode

**Although NSF resides on a remote server, the app always runs in the Notes client**


- Incurs network overhead as everything must execute in the **local** XPD Web Container



## Other Use Cases To Handle...

### Reducing Network Traffic



- Network traffic can be grossly inflated by sub-optimal app design practices, e.g.
  - **computeWithForm** on a Domino doc data source will pull the Form across the net
    - A Form element is arbitrarily large, e.g. includes all subforms and any other children
    - Large Computed Forms + High Latency Networks = Poor XPiNC performance 
  - Inefficient data access operations, e.g.
    - Opening documents on-the-fly within a data iterator
      - » Custom columns in a viewPanel control that calls `rowData.getDocument().getItemXxx();`
    - Performing dynamic remote NSF lookups when computing “rendered” property values

### Preloading Many Apps...

- What happens when I have **many instances** of the same application?
  - `XPagesPreloadDB=AppA.nsf/home.xsp, AppB.nsf/home.xsp, ... AppN.nsf/home.xsp`
- Not practical to constantly add and maintain NOTES.INI with new app names
- All app instances share a common design ...
  - and it is the Design elements that we need to preload !
- Can the Single Copy XPages Design feature help?
  - Yes, from 8.5.3 FP3 onwards



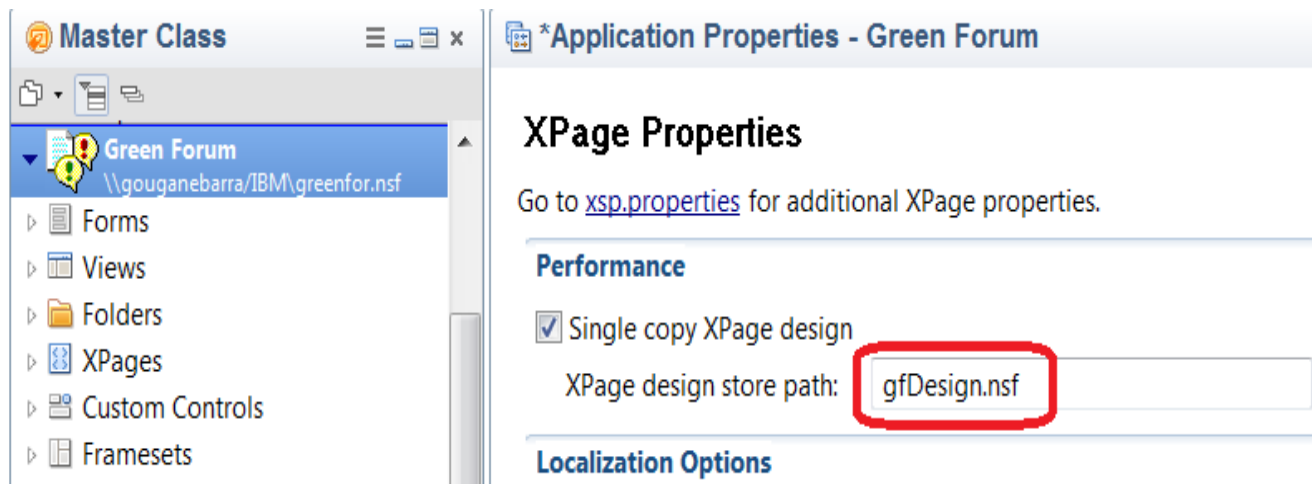
## XPiNC SCXD + Preload Pattern

- **Single-Copy-XPAGE-Design feature supported in Social Edition Client**

- A 'design-only' copy of your XPiNC app can be locally deployed and preloaded
- This implies **both** Java classes (\*.class) and resources (\*.css, \*.js etc) are cached
- When SXCD is in force, computeWithForm will load the Form locally
  - This is analogous to what the native Notes client does with Cache.NDK
- VERY efficient for many instances of a single application on XPiNC



Demo



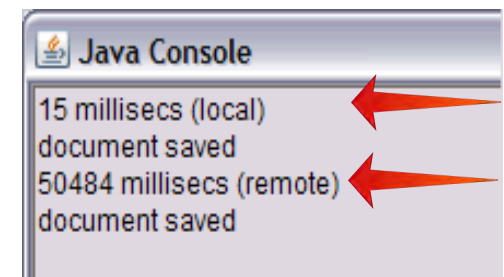
## computeWithForm – Standalone Example

- **computeWithForm Java agent**

- Run Java agent in local db, then swap first line to run against a remote replica

```
Database app = session.getCurrentDatabase();  
  
// Database app = session.getDatabase("myServer", "remoteReplica");  
  
Document doc = app.createDocument();  
  
doc.replaceItemValue("Form", "frmTask");  
  
doc.replaceItemValue("Subject", "computeWithForm operation");  
  
doc.replaceItemValue("Body", "Text ... ..");  
  
long startTs = System.currentTimeMillis(); // log time before computeWithForm operation  
if (doc.computeWithForm(false, false)) {  
    long endTs = System.currentTimeMillis(); // log time after computeWithForm operation  
    System.out.println(Long.toString(endTs-startTs) + " millisecs (local)");  
    doc.save(true, true);  
    System.out.println("document saved");  
}
```

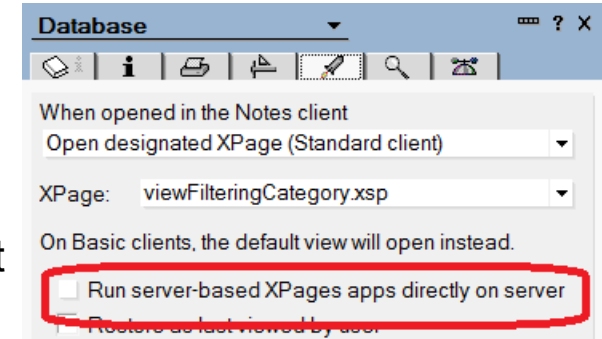
 **Sample Results**



## XPiNC Run On Server Option

### Helps address performance issues where

- XPages web application is not optimized for Notes client
- Offline access is not a requirement
- Maintains XPages client look and feel
- Supports XPiNC custom behaviours
  - Notes bookmarking
  - Notes client context menus, e.g. Open In Designer
  - EnableModifiedFlag/DisableModifiedFlag
- XPiNC apps can be coded conditionally according to execution mode
  - Works with Notes account framework so re-authentication can be avoided
    - Avoids dialogs requesting web credentials within Notes
    - Enables fallback to conventional XPiNC execution



```
<xp:this.rendered><![CDATA[#{javascript:!context.isRunningContext("Notes")}]]></xp:this.rendered>
```

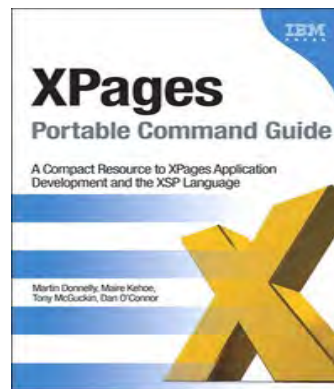
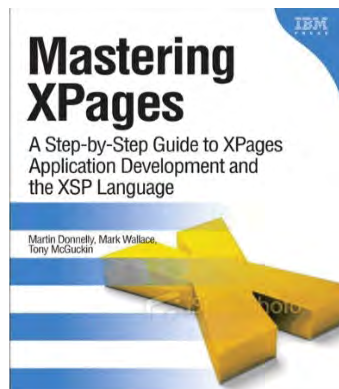
```
<xp:label.rcp rendered="false"></xp:label.rcp>
```



## Summary

### Apart from all that ...

- Lots of work done on XPages stability
  - SPRs, PMRs
  - Fix Pack and Hot Fixes
- Customer Collaboration – Unleash the Lab Initiative !
- Performance Master Class in Dublin
  - Oversubscribed 2-day deep dive session
  - Reference materials to follow on OpenNTF.org
- Two New XPages Books in 2012
- 2<sup>nd</sup> Edition of Mastering XPages due in 2013





# Question and Answer Time!



**Ed Brill**



**Dan O'Connor**



**Martin Donnelly**

## TLCC Special Offer until Nov 30th

- 20% Off TLCC courses (5% on any sale-priced course)

[www.tlcc.com/webinar](http://www.tlcc.com/webinar)

## New! Rapid XPages Development course

- Available in January
- Booking private on-site classes now for next year

## TLCC Questions?

[paul@tlcc.com](mailto:paul@tlcc.com)

888-241-8522 or 561-953-0098

## GBS Questions?

[info@gbs.com](mailto:info@gbs.com)

877-228-6178

[www.gbs.com](http://www.gbs.com)



#XPages

@edbrill

@GBSKnows

@docconnor78

@TLCCLtd @tweeterdonnelly